



Online Saddle Fit Evaluations

Photo / Video Instructions

Option to purchase up to 3 Horse Evaluations at a time.

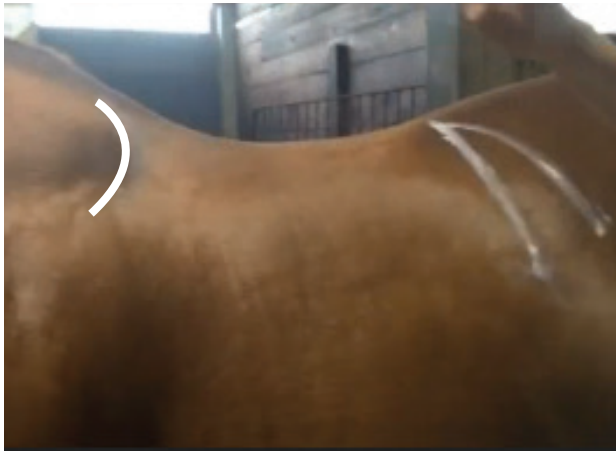
Version: 20190311

Horse & Saddle Measurements

Record in boxes below - you will be required to enter these on the Online form.

1. **Horse's Saddle Support Area (SSA):** Measured in inches on the horse's back. Watch video: <https://schleese.com/wp-content/uploads/2017/12/Measuring-Saddle-Support-Area-with-Alexa-Lindsay.m4v> or visit our website page <https://schleese.com/schleese-long-distance-fit-kit-instructions/> and refer to Step 2 of the Long Distance Fitting Kit Instructions.

inches



2. **Saddle Length:** Pommel to cantle measured in inches (center of pommel to center of cantle).

inches



3. **Panel length:** Measured in inches edge to edge.

inches



Photo/Video Instructions

Photo Instructions:

Photo1: Near (Left) Side View - No Tack (horse standing square on level ground with neck in line with body - this is to see the entire horse's profile and conformation).



Photo 1

Photo 2a: Behind View(s) - No Tack (horse standing square on level ground - stand on a stool behind the horse and take a photo over your horse's back while ensuring horse's head and neck are in straight alignment. This will allow us to determine if one shoulder is larger than the other.)

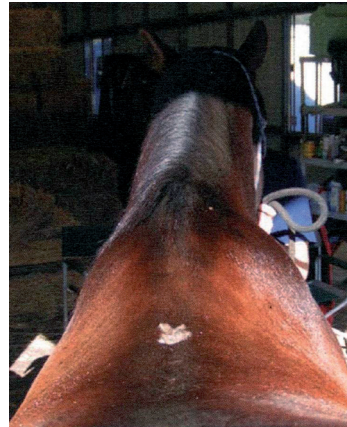


Photo 2a



Photo 2b

Photos 3-6 Instructions: No Pad / No Girth)

Horse standing on level ground.
Place the saddle straight on your horse's back (ensure that the saddle is not twisted check by standing on a stool behind your horse and straighten if necessary).

Photos 3-4: Horse & Saddle
Left & Right Side Views



Photos 3-4

Photos 5-6: Leaving saddle in place take a 45° front angle to the shoulder both sides.



Photos 5-6

Photos 7-9: While horse is standing square on level ground, **Girth Up Securely NO Saddle Pad.**

Photos 7-8: Let the saddle sit as it naturally wants to and without straightening it, take a side photo from each side.



Photos 7-8

Photo 9: With horse standing square (head & neck in line with its body), take photo from behind (you may need a stool).

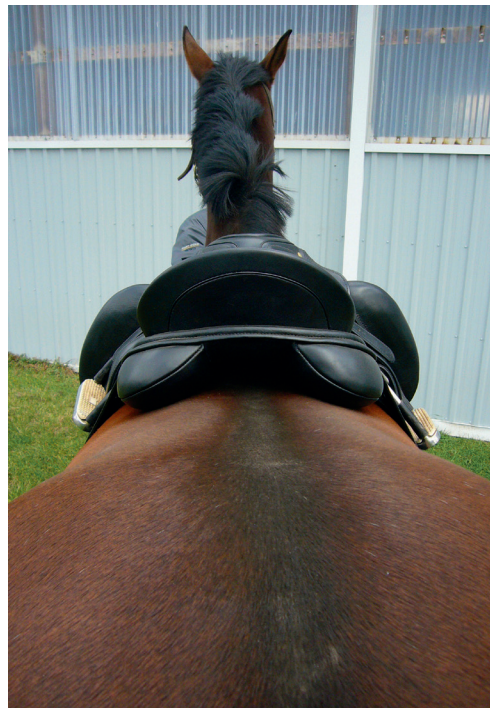


Photo 9

Photos 10-11: While horse is remaining square with neck/head in line with body, take the front 45° angle to the shoulder views from both sides as in Photos 3-4.



Photos 10-11

Photos 12-14: DUST PATTERNS

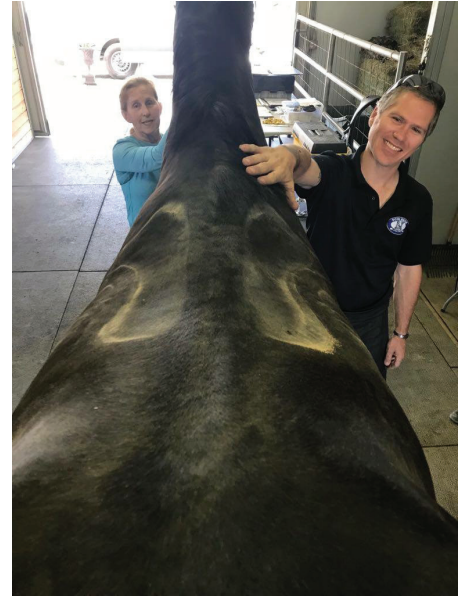
Take a fairly close up photo of the entire sweat pattern from both sides and one photo from behind while someone holds your horse's head/neck straight in line with their body.



Photo 12



Photo 13



Photos 14

Video Instructions:

Walk-Trot-Canter a 20 metre circle in each direction. The video should not be more than a couple of minutes.

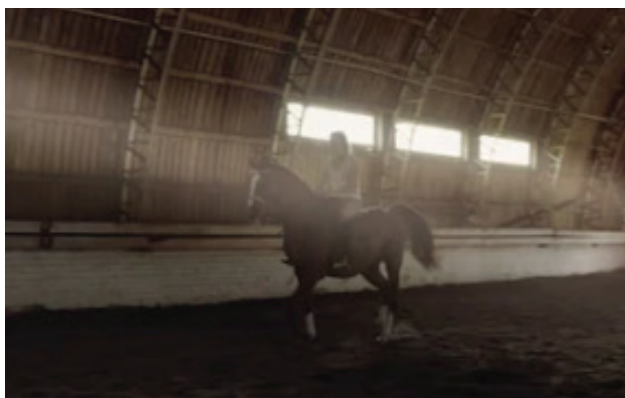
** Note:

1. Make sure that the horse and rider are close enough to the camera to make clear observations.
2. Ensure there is ample lighting if shooting in an arena.
3. Make sure you do not have any baggy jacket or coat hanging over the back of your saddle. We must be able to see the entire saddle as you ride.



Too far away

Good distance



Bad Lighting

Good Lighting

